



# Capability Statement 2023



Southern Cross Electrical Engineering Limited  
ABN: 92 009 307 046  
ASX:SXE



# About SCEE Group

Southern Cross Electrical Engineering Limited ('the SCEE Group') was founded in 1978 and listed in 2007 (ASX:SXE). Over that time we have grown to be a leading national electrical, instrumentation, communications and maintenance services group of businesses. The acquisitions of Datatel in 2016, Heyday in 2017 and the Trivantage Group, which includes the businesses of S.J. Electric, SEME Solutions and Trivantage Manufacturing, in 2020 means the SCEE Group is now diversified across three broad sectors of infrastructure, commercial and resources.

SCEE Electrical is the original operating business of the SCEE Group, historically focussed on resources and industrial projects, but more recently diversified into transport, infrastructure, defence, utilities and renewables.



Datatel is a telecoms and communications specialist and provides services to the education, health, government, resources and transport sectors.



Heyday is a NSW and ACT-based electrical contractor undertaking commercial building construction and fit-outs, and servicing the office, retail, hotel, high-rise residential, education, health, transport, industrial and data centre sectors.



S.J. Electric is a national provider of electrical and maintenance services to supermarkets, and the retail, commercial and water sectors.



SEME Solutions provides electronic and physical security services to the resources, law-enforcement, custodial, industrial, commercial building and health sectors.



Trivantage Manufacturing is a leading manufacturer of packaged electrical solutions including premium quality switchboards, kiosk substations and switchrooms, covering low to high voltage capabilities across the infrastructure, resource and commercial sectors.



# Corporate Snapshot

## Financial Year 2022 highlights

REVENUE \$553.3m	EBITDA \$35.3m	NPAT \$15.3m
NET ASSETS \$174.3m	NET CASH \$53.1m	BONDING CAPACITY \$100m
BONDING HEADROOM \$37m	MARKET CAP \$153m	NO. OF EMPLOYEES 2,000

- Listed on ASX since 2007
- Experienced Board and senior management team
- Governance framework aligned with ASX and industry best practices
- Strong balance sheet and bonding capacity
- Large workforce with a proven ability to recruit to meet client needs
- Excellent safety record and commitment to zero harm
- Low carbon footprint
- Investment in systems and processes to enhance project delivery
- Strategy of growth through diversification

<b>Blue-chip client base</b>  <ul style="list-style-type: none"><li>Rio Tinto</li><li>BHP</li><li>Multiplex</li><li>CPB</li><li>Woolworths</li><li>Coles</li></ul>	<b>Diversified markets</b>  <ul style="list-style-type: none"><li>Resources</li><li>Infrastructure</li><li>Commercial</li></ul>	<b>Recurring earnings growth</b>  <ul style="list-style-type: none"><li>Services</li><li>Maintenance</li><li>Frameworks agreements</li></ul>
<b>Decarbonisation theme</b>  <ul style="list-style-type: none"><li>Exposure across decarbonisation chain</li></ul>	<b>M&amp;A opportunities</b>  <ul style="list-style-type: none"><li>Track record of successful acquisitions</li></ul>	<b>Strong dividend yield</b>  <ul style="list-style-type: none"><li>4cps final dividend declared (FY22)</li></ul>

# Our Markets

## Expertise in diverse markets



**Resources**

We deliver projects for some of Australia's largest mining and mineral processing sites, port facilities and transport operations. We offer solutions for LNG upstream and downstream facilities, and for petrochemical refineries. Our specialist electrical, instrumentation and communication maintenance services are contracted across mine sites from operational centres to camps and mining infrastructure, while our construction experience includes the establishment of first power sources at greenfield sites through to construction and commissioning of major ore processing facilities.



**Infrastructure**

We work alongside leading contractors in the construction and maintenance of private and publicly funded infrastructure assets. Our teams undertake major and minor works for industrial, renewables and energy projects, utilities, defence facilities, telecommunications, transport, custodial, healthcare and education.



**Commercial**

We bring our expertise to the design, supply, installation and maintenance of electrical and communications solutions for commercial buildings, high-rise residential developments, hotels, shopping centres, supermarkets, factories and warehouses. We work with leading property developers, construction companies and fit-out specialists on new-builds, upgrades and refurbishments. We deliver electrical infrastructure, building controls, energy management systems, lighting, security, communications, networking, maintenance and structured cabling systems.



**Decarbonisation**

We are positioned to offer our services to the global decarbonisation initiatives shaping our markets. We are exposed to both the direct decarbonisation of our clients' operations and to servicing the demand for commodities to enable general global decarbonisation. We are leveraged across many aspects of the decarbonisation chain including solar farms, wind farms, lithium and copper projects, recycling plants, power efficiencies and building design optimisation.



# About SCEE Electrical

## A leading electrical contractor to the resources and infrastructure sectors.

SCEE Electrical is a leading and trusted national provider of specialised electrical, instrumentation, maintenance and communication services to the resources and infrastructure sectors.

As part of the SCEE Group founded in 1978, SCEE Electrical has grown from strength to strength and built a reputation forged on close relationships. We pride ourselves on our commitment to safely deliver quality electrical projects to our clients.

Every member of our experienced team shares our deep understanding of electrical contracting. We take pride in our proven abilities to install economic and pragmatic solutions that work.

As a SCEE Electrical client, you can expect our unwavering support throughout the life cycle of your assets – from construction to commissioning, to operations, maintenance and eventual decommissioning. We aim to bring over 40 years of experience, thought leadership and smart solutions to each stage, delivering real value.

With our head office located in Perth, Western Australia, plus many regional facilities across Australia, SCEE Electrical can deliver its services Australia wide. Our expertise and capacity enables us to undertake complex large scale projects in harsh and remote environments.

We make it our business to remain abreast of the latest technologies and industry standards. This way, we can take a forward-thinking approach to develop and install the smartest, most energy efficient, and sustainable solutions for our clients.

We are known for our “can-do” attitude that means we will continuously strive to deliver consistent, reliable and repeatable quality. Our reputation for taking a one-team approach in collaboration with clients drives all-round project success.

SCEE Electrical was over 18.7 million man-hours and nearly 20 years Lost Time Injury free in Australia at 30 June 2022.





# About Datatel

## Leading the way in commercial electrical and communications solutions.

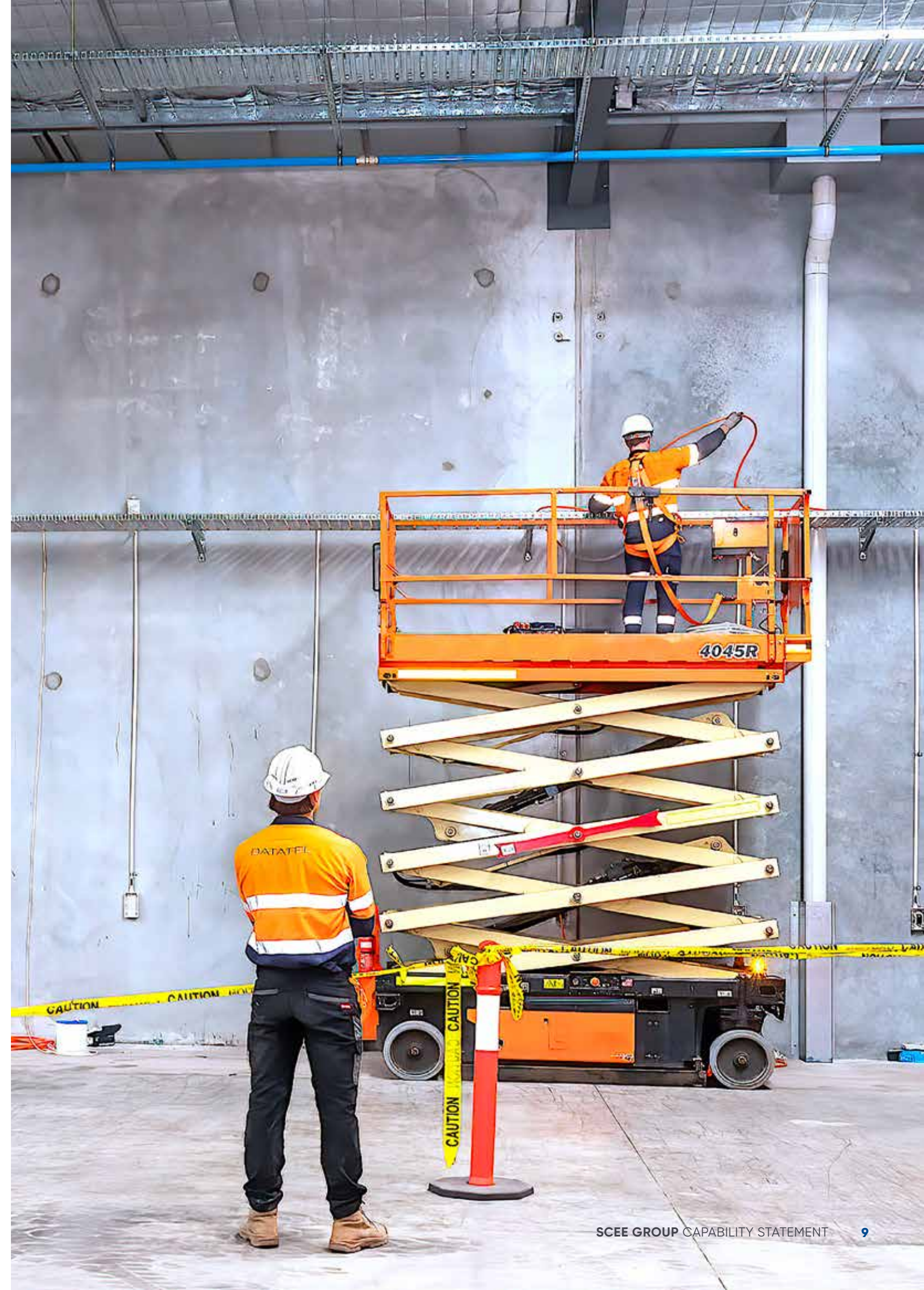
Datatel is proud to be one of Western Australia's premier Electrical and Communications contractors. Specialising in Government, Corporate, Education and Resources works, we have a team of skilled Electricians, Technicians and Apprentices who are dedicated to providing the highest level of expertise and service to our clients

We have been trusted by our clients nationally for over 20 years to deliver safe, reliable and high quality solutions to sites throughout Metro and Regional Western Australia. Datatel are experts in the design, implementation and integration of Electrical and Information Transport Systems and the supporting infrastructure.

Datatel believes the safety and health of our people is of the greatest importance. To assist us in achieving our objectives and targets, Datatel maintains, monitors, and continually improves our ISO 45001 Certified Health and Safety Management System.

We have a reputation of being professional and easy to deal with – working with our clients to get the job done. Our teams and equipment can be mobilised to complete projects state-wide, and our success is underpinned by a focus on quality, innovation and training.

Datatel have always been at the forefront of technology, investing in cloud based systems and developing our own proprietary cloud based system, "team.datatel", to support efficient delivery of our operations, as well as providing our clients real-time access to job information via our Data-Track portal. Our systems are fully integrated with our ISO 9001 certified Quality Management System, which allows us to provide extremely high levels of service unsurpassed in the industry.





# About Heyday

## Leading the way in commercial electrical and communications solutions.

Built on a long standing presence and track record in NSW and the ACT, Heyday is a leading installer of electrical and data communications cabling, products and systems.

Established in 1978 and now part of the SCEE Group, we have delivered hundreds of projects for clients in the commercial buildings and fit-outs, hotels, retail, high-rise residential, maintenance services, infrastructure, transport, defence, industrial, education, health, and data centre sectors.

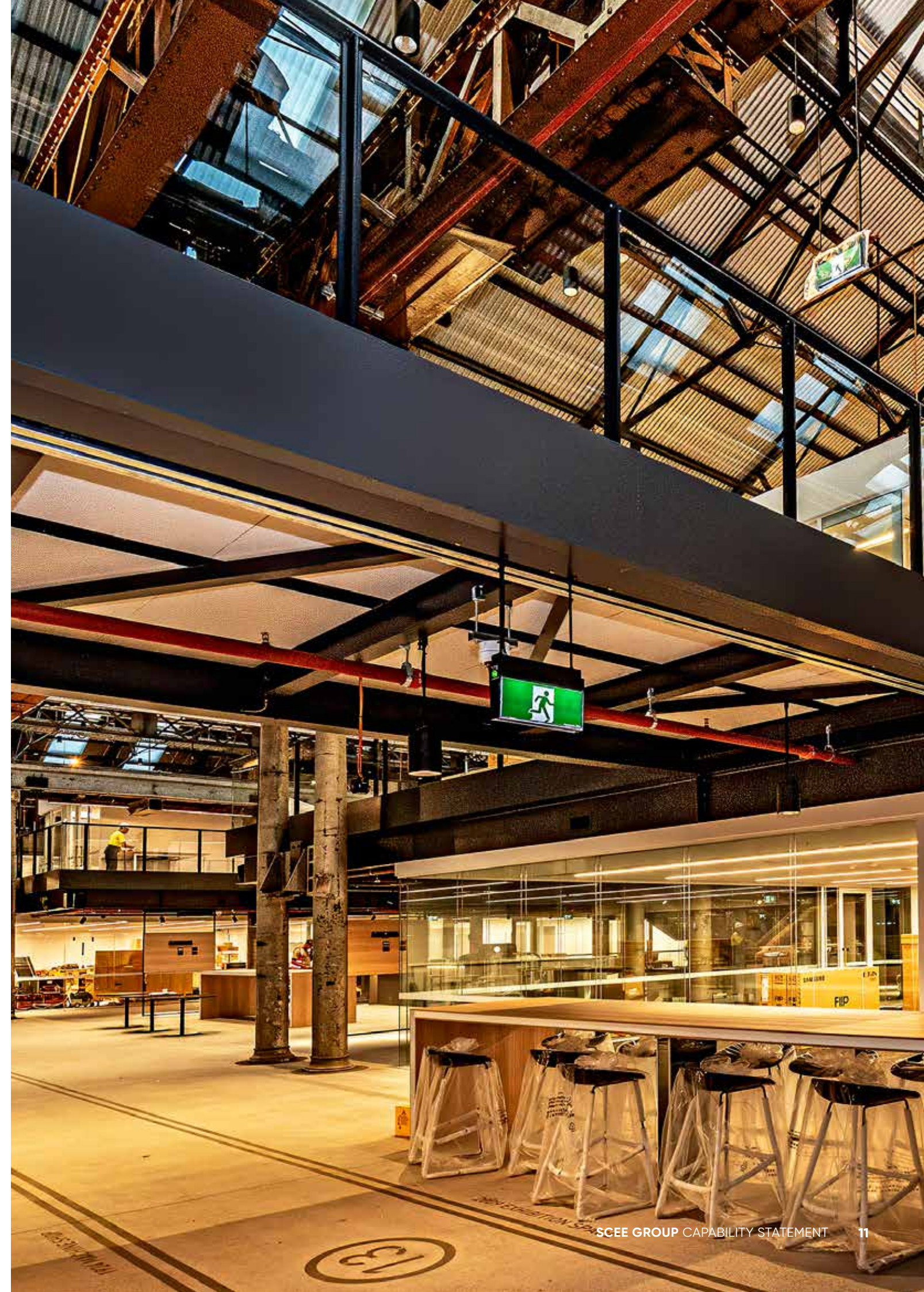
Our projects range anywhere from Australia's largest infrastructure developments to local schools and we pride ourselves on delivering certainty through our comprehensive range of electrical and communications skills.

Heyday brings together strong industry knowledge, technical expertise, experienced project planning, and management acumen on every contract. We are regularly engaged on construction projects that require the management and coordination of people, complex equipment, and suppliers, plus testing and commissioning to required standards.

Our personal commitment to our clients results in repeat and referral business. Together with our uncompromising quality, this approach continues to strengthen our trusted reputation for outstanding performance.

We leverage the latest technologies and industry standards, so we can support clients with the adoption and integration of any new electrical plant and equipment. This ensures we continue to take pride in developing and installing smart, energy-efficient, sustainable solutions.

We are known for our "can-do" attitude that means we will continuously strive to deliver consistent, reliable and repeatable quality. Our reputation for taking a one- team approach in collaboration with clients drives all round project success.





# About S.J. Electric

## Leading the way in commercial electrical solutions nationwide.

S.J. Electric is proud to be one of Australia’s foremost electrical services providers, reaching clients in metropolitan areas and remote regions that span all corners of the country.

We remain highly respected for delivering safe, quality solutions that focus on commercial and industrial electrical installation and maintenance projects. We are renowned for being sought-after specialists in commercial refrigeration as well as light and power services. Our clients have access to our 24 hour/7 days a week service and maintenance offerings across all states and territories in Australia.

Trusted by a broad range of clients in key sectors, the S.J. Electric team brings over 50 years of proven excellence and unmatched experience to businesses that include national supermarket and retail chains, as well as telecommunications providers and industrial infrastructure clients.

Founded in Victoria in 1968, S.J. Electric quickly established a presence before expanding into other states and building a successful electrical services business.

S.J. Electric is a member of the SCEE group of companies, adding its years of expertise and specialist experience to one of Australia’s leading electrical, instrumentation, communication and maintenance services groups.

Today, S.J. Electric offers an exceptional reach, with offices in six states, plus storage facilities and workshops. Our nationwide team of highly trained electricians, engineers and specialists as well as a vast network of sub-contract partners working in regional areas, ensure we are able to provide consistent levels of quality service across Australia.

This approach gives us the edge, particularly when providing teams of experts for simultaneous large-scale commercial refurbishment projects, ensuring that the same high-quality work and proven project management capability is delivered across any number of sites, no matter how large the project or how many states are involved.

Within our significant Utilities and Resources division we employ a dedicated team of design and control system engineers with a range of experience levels from graduate to principal. This team includes chartered and registered engineers, enabling us to deliver and certify complex electrical, instrumentation and control design projects.

S.J. Electric is dedicated to delivering specialised electrical solutions while meeting stringent safety standards and rigorous quality measures. From new builds to refurbishments and upgrades, we apply our expertise to supporting clients in rolling out the significant electrical infrastructure they require to operate efficiently.

Our teams understand how to help clients maximise their productivity through innovative energy management technologies. The goal is to deliver every project right first time, on time, and on budget.





# About SEME Solutions

## Leading the way in electronic and physical security systems and integration.

SEME Solutions have been one of Australia's leading providers of security system solutions for over 50 years. SEME Solutions specialise in the consulting, design, supply, installation, integration, preventative maintenance and servicing of CCTV, Access Control, Workforce Access Management, Intruder Detection, Perimeter Solutions and Gates, Nurse Call and Duress systems.

Established in 1967 in Perth, Western Australia, and now a member of the SCEE Group, SEME Solutions has grown from a small electrical installation and repair business serving the Perth metropolitan area to a national security system integration business with offices in Perth, Brisbane and Mackay and partner hubs in Sydney, Melbourne, Adelaide and Hobart.

Our comprehensive security system solutions support small, medium and large-scale enterprises in protecting their assets and their people, managing their Occupational Health and Safety requirements and complying with other building, business and operational regulations and needs.

The team at SEME Solutions are amongst the most skilled security system integrators

in the country. Our technicians operate in the most challenging environments such as high-rise buildings, and operational mine sites, prisons and ports and have proven experience integrating not only a wide range of market leading products but also working with businesses that require the integration of new technology with existing legacy products and systems.

With expertise in existing site installations and upgrades in the Resources (mining), Infrastructure (custodial and healthcare) and Commercial (high-rise buildings and shopping centres) sectors we understand our clients' specific requirements for reliable, compliant systems to support their broad business operations. Many of our clients have multiple sites in remote locations across many states and territories. SEME Solution's national network of experienced, qualified security system specialists means we can deliver excellent outcomes for any application in any location.

Our clients value our consultative approach, our meticulous attention to detail and our ability to deliver customised security solutions to suit their specific site and organisational needs.





# About Trivantage Manufacturing

## Leading the way in the design and manufacture of switchboards and power distribution systems in the commercial, infrastructure and resources sectors.

For over 50 years Trivantage Manufacturing has earned a reputation nationally for the design, manufacture and installation of the highest-quality 100% Australian made commercial and industrial switchboards.

Established in 1968 and now part of the SCEE Group, Trivantage Manufacturing has delivered tens of thousands of electrical switchboards earning an enviable track record of quality and reliability. In more recent times the Trivantage Manufacturing product range has expanded beyond the traditional switchboard offering to now include a range of Australian designed and manufactured LV and HV power distribution products.

At Trivantage Manufacturing we take care of all of our client's needs. We have the capacity to undertake and manage design, sheetmetal fabrication, powder coating, assembly, testing, installation and project management 'in-house' from three manufacturing facilities across Australia which enables us to deliver complete turn-key solutions.

Our clients value our consultative approach, our meticulous attention to detail and our ability to deliver quality solutions that meet their specific need.

From the harshest outback conditions to skyscraping city sites, Trivantage Manufacturing design cost-effective, purpose-built switchboards and power distribution systems that provide the highest levels of reliability and flexibility while meeting the particular challenges of the location.

To consistently build the best switchboards and power distribution systems in Australia you need a team that understands Australian conditions. This is why we design and manufacture all of our products locally. Trivantage Manufacturing ensures its people are of the highest calibre and this reflects in the quality of the products we supply to the market. At Trivantage Manufacturing, professional expertise is valued and rewarded, so our clients benefit from better outcomes.

Over the past 50 years, we have designed and built in excess of 50,000 switchboards and many of the customers that we first started building switchboards for remain customers today.





# Feature Projects – Infrastructure



## RuData SYD053 Data Centre

**Location**      Huntingwood, NSW  
**Market**        Infrastructure – Data Centre  
**Performed by**   Heyday Group

**Scope of Work**  
The project consists of a purpose built data centre building known as SYD053 and has been built in six stages. The base building and associated infrastructure and external works including tanks and provision for future installation of chillers. There are a number of plantrooms and associated support rooms. SYD053 is located adjacent to SYD051, which is an existing operational facility. These works included the provision of a link between the two buildings with access to SYD053 via SYD051. Heyday's scope includes high and low voltage systems, generators and UPSs.



## Westmead Hospital Central Acute Services Building (CASB)

**Location**      Westmead, NSW  
**Market**        Infrastructure – Hospital  
**Performed by**   Heyday Group

**Scope of Work**  
The Westmead Hospital CASB is a 14 storey building with a total gross floor area of approximately 68,500m<sup>2</sup>, located in the existing Westmead hospital precinct. Heyday's scope includes full design and construction of low voltage systems, generators, UPSs, communications and security.



## Ergon Energy Asset Inspection and Maintenance Services

**Location**      Northern Region, QLD  
**Market**        Infrastructure – Utilities  
**Performed by**   SCEE Electrical

**Scope of Work**  
Operating under a service agreement, SCEE Electrical's scope is to maintain regulatory safety and reliability of distribution supply network via inspection, testing and maintenance of overhead lines, earthing systems, pillars and street-light poles.



## CPBSJH JV WestConnex M4 East Project

**Location**      Sydney, NSW  
**Market**        Infrastructure – Transport Road  
**Performed by**   SCEE Electrical

**Scope of Work**  
This project involved extending the M4 Motorway tunnels between Homebush and Haberfield. CEE Electrical's scope included cross passage and mainline tunnel installation of field devices, lighting, power and panels and the commissioning and testing of lighting, power CCTV and communications.



## CPB Sydney Metro Pitt Street Station and Towers

**Location**      Sydney, NSW  
**Market**        Infrastructure and Commercial  
**Performed by**   Heyday Group

**Scope of Work**  
The Pitt Street metro integrated station development will connect the Pitt and Castlereagh Street station entries with retail and commercial facilities. Heyday's scope includes full design and construction of low voltage systems, UPSs and communications, and the electrical services design and construct contracts for commercial and residential towers above Pitt Street Station.



## Multiplex Western Sydney International Airport

**Location**      Badgerys Creek, NSW  
**Market**        Infrastructure – Airport  
**Performed by**   Heyday Group

**Scope of Work**  
The Western Sydney International (Nancy Bird Walton) airport extent of works comprises the terminal building, airside apron, landside plaza, carparking and two technical engineering rooms (TER) located at the site boundary. Heyday's scope includes full design and construction of high voltage system, low voltage systems, UPSs and communications.



## GNC Northlink Stage II

**Location**      Ellenbrook, WA  
**Market**        Infrastructure – Transport Road  
**Performed by**   SCEE Electrical

**Scope of Work**  
Great Northern Connect, a joint venture between Laing O'Rourke and BGC Contracting, was engaged by Main Roads WA to deliver the NorthLink Stage 2 project. SCEE Electrical was awarded the contract to supply, install, test and commission all electrical and Intelligent Traffic Systems and associated works for NorthLink WA Stage 2.



## RAAF Base Tindal Works

**Location**      RAAF Base Tindal, Katherine, NT  
**Market**        Infrastructure – Defence  
**Performed by**   SCEE Electrical

**Scope of Work**  
SCEE Electrical were subcontracted for the design, supply, installation, testing and commissioning of the electrical component of the upgrade of the existing airfield facilities at RAAF Base Tindal to support the New Air Combat Capability (NACC) being acquired by the Australian Defence Force. The upgrade to existing airfield facilities is to support the aircraft, provide training facilities for the aircraft, a new 75 squadron headquarters, aircraft maintenance hangars and shelters facilities, storage facilities for ground support equipment and warehouse facilities.



# Feature Projects – Resources



## Rio Tinto Gudai-Darri Iron Ore Mine

**Location** Pilbara, WA  
**Market** Resources – Iron Ore  
**Performed by** SCEE Electrical

**Scope of Work**  
The project is for a new 43 million tonne annual capacity iron ore mine. SCEE Electrical's scope is for the electrical and instrumentation works at the mine processing plant.



## Citic Pacific Maintenance Framework Agreement

**Location** Cape Preston, WA  
**Market** Resources – Iron Ore  
**Performed by** SCEE Electrical

**Scope of Work**  
SCEE Electrical has in place a Maintenance Framework Agreement with Citic Pacific Mining to provide operational support across their Cape Preston operations. The team also provides the clients with budgeting, scheduling and construction support for sustaining capital projects to ensure the performance of the process area is met.



## MARBL JV Kemerton Lithium Processing Plant

**Location** Kemerton, South West WA  
**Market** Resources – Lithium  
**Performed by** SCEE Electrical

**Scope of Work**  
SCEE Electrical is delivering the full E&I scope for both the Hydromat and Pyromet sections of the plant which initially comprises of two trains each with a capacity of 25,000 tons per annum.



## BHP Sustaining Capital Framework Agreement

**Location** Pilbara, WA  
**Market** Resources – Iron Ore  
**Performed by** SCEE Electrical

**Scope of Work**  
SCEE Electrical has a framework agreement with BHP Billiton to provide sustaining capital activities across their operations in Western Australia. The agreements allow for a number of different contracting models that range from schedule of rates, lump sum and reimbursable contracts to service minor projects and capital projects ranging from \$0-\$10m each.



## BHP Villages Security Project

**Location** Pilbara, WA  
**Market** Resources – Mining  
**Performed by** SCEE Electrical, SEME Solutions and Datatel

**Scope of Work**  
SCEE has been engaged to perform upgrades to access, lighting, and monitoring systems across BHP's Villages in the Pilbara. The works have drawn on capabilities from businesses across the SCEE Group, including SCEE Electrical, SEME and Datatel, to deliver a multi-technology solution.



## Chevron Wheatstone LNG Project

**Location** Onslow, WA  
**Market** Resources – LNG  
**Performed by** SCEE Electrical

**Scope of Work**  
KSJV (50:50 joint venture between SCEE Electrical and Kentech) was engaged by Bechtel to complete the electrical and instrumentation installation services for the downstream portion of the Chevron-operated Wheatstone LNG processing facility.



## Kwinana Refinery Site Access Entry Hubs

**Location** Kwininana Beach, WA  
**Market** Resources – Mining  
**Performed by** SEME Solutions

**Scope of Work**  
SEME Solutions designed and constructed two temporary solar powered site access entry hubs for the Kwinana refinery construction project. The two independent site entry hubs consisted of turnstiles and CCTV for monitoring of access/egress. Both hubs are powered by solar seven days a week for autonomous operation.



## Newmont Mining Boddington General Electrical Services

**Location** Boddington, WA  
**Market** Resources – Gold  
**Performed by** SCEE Electrical

**Scope of Work**  
SCEE Electrical was awarded a contract to complete general electrical services for the Boddington Gold Mine operations. Five packages of work include: High Voltage, Testing, General Electrical Services and Equipment, Instrumentation Services and Equipment, and Consulting and Specialised Electrical Services and Equipment.



# Feature Projects – Commercial



## Brookfield Place Sydney

**Location** Sydney, NSW  
**Market** Commercial – Base Building Office and Integrated Fit-out  
**Performed by** Heyday Group

**Scope of Work**  
The project consists of a new six star green star rated 30 storey office tower, two heritage buildings that were refurbished, retail space and a world-class transit hall for Wynyard station. The project also included integrated fit-outs for National Australia Bank (33,013m<sup>2</sup> NLA), Allianz (12,367m<sup>2</sup> NLA) and Brookfield (6,226m<sup>2</sup> NLA). Heyday's scope includes full design and construction of high voltage substation, low voltage systems, generator system, UPS, communications and security.



## Stockland Shopping Centre – Greenhills

**Location** East Maitland, NSW  
**Market** Commercial – Retail  
**Performed by** Heyday Group

**Scope of Work**  
The project consists of a major expansion and redevelopment of the existing centre to increase its size from approximately 30,000m<sup>2</sup> to 70,000m<sup>2</sup>. The redevelopment has delivered a best in class retail complex providing the catchment with a high quality retail facility to compete with the regional centres in Newcastle. Heyday's scope includes full design and construction of high voltage substations, low voltage systems, communications and security.



## 4 Parramatta Square

**Location** Parramatta, NSW  
**Market** Commercial – Base Building Office and Integrated Fit-out  
**Performed by** Heyday Group

**Scope of Work**  
The project consists of a new five star green star rated 40 storey office tower inclusive of a three level basement, three level podium, retail floor, public domain area and 30 level integrated fit-outs for Department of Planning, Industry and Environment (43,940m<sup>2</sup> NLA), Department of Customer Service (18,675m<sup>2</sup> NLA) and Department of Regional NSW (2,290m<sup>2</sup> NLA).



## Republic Precinct

**Location** Belconnen, ACT  
**Market** Commercial – High-Rise Residential/Retail/Hotel  
**Performed by** Heyday Group

**Scope of Work**  
The development is in two parts – stage one republic and dusk which is 392 residential apartments and 20 commercial tenancies and stages two and three high society and nightfall which is 874 residential apartments, a 152 room hotel and 35 commercial tenancies. Heyday's scope includes full design and construction of low voltage systems, main switchboards, communications, busduct, MATV and audiovisual services.



## Sandstone Education Building

**Location** Sydney, NSW  
**Market** Commercial – Hotel  
**Performed by** Heyday Group

**Scope of Work**  
The project consists of a modification to an existing state heritage listed building (The Education Building) to a six star hotel which includes three basement levels for plant, back of house and main production kitchen, ground level frontage to Bridge street and contains restaurant and retail tenancies. The hotel contains an open central atrium 192 suites, swimming pool, gym and spa facility. Heyday's scope includes full design and construction of low voltage systems, communications and security.



## Star City – Sovereign Resort Expansion

**Location** Pyrmont, NSW  
**Market** Commercial – Gaming  
**Performed by** Heyday Group

**Scope of Work**  
The project located at The Star Casino, Pyrmont involved the expansion of the existing Sovereign Resort gaming area on the third floor to accommodate additional gaming facility, inclusive of private dining facilities. The expansion was done over four stages, which scales 10,000m<sup>2</sup> of Level three (including 3,200m<sup>2</sup> of existing indoor gaming) and an additional 6,800m<sup>2</sup> converted indoor gaming area. Heyday's scope includes full design and construction of low voltage systems, UPS, communications and security.



## Coles and Woolworths Supermarkets

**Location** Nationally  
**Market** Commercial – Supermarkets  
**Performed by** S.J. Electric

**Scope of Work**  
S.J. Electric have been providing ad-hoc electrical and instrumentation maintenance services to major national supermarkets for over 40 years with a more formalised preventative and reactive service and maintenance contract being in place for the last 15 years.



## Atlassian HQ

**Location** Sydney, NSW  
**Market** Commercial – Base Building Office and Integrated Fit-out  
**Performed by** Heyday Group

**Scope of Work**  
Heyday has been engaged to deliver the electrical services design and construct contract for the Atlassian Australian HQ building development. The building will be the world's tallest hybrid-timber building at 39 storeys high, distributed across eight different habitats with 75,000m<sup>2</sup> of gross floor area. Sustainability targets for the development include a 50% reduction in operational energy compared to a conventional building, and the use of 100% renewable energy to power the building. Additionally, it has a 5.5-star NABERS Energy Commitment Agreement and targeting a 6-star Green Star rating.



# Feature Projects – Decarbonisation



## Bouygues NSW Solar Farms

**Location** Central NSW  
**Market** Renewables  
**Performed by** SCEE Electrical

**Scope of Work**  
SCEE Electrical was engaged by Bouygues Construction Australia to provide electrical services for the construction of four Photovoltaic (PV) Plants in central New South Wales. The projects were located in the vicinity of the towns of Parkes, Griffith, Dubbo and Narromine with a combined power output of 130 megawatts. Owned and developed by renewable energy developer Neoen, these solar farms will be in operation for the next 20 years.



## EDL Agnew Gold Mine Renewable Hybrid Power Station

**Location** Agnew, WA  
**Market** Renewables  
**Performed by** SCEE Electrical

**Scope of Work**  
SCEE Electrical was awarded the contract for the balance of plant for the Agnew Gold Mine Power Station Renewable Hybrid Station. The project consists of gas, diesel and renewable generation working with a number of reciprocating generators, renewable generation, a battery energy storage system and associated balance of plant.



## Rio Tinto Tom Price Battery Energy Storage Facility

**Location** Tom Price, WA  
**Market** Renewables  
**Performed by** SCEE Electrical

**Scope of Work**  
SCEE has been engaged for the supply of civil, structural, and electrical works for the installation of the balance of plant for the Tom Price 45MW/12MWh Battery Energy Storage for Spinning Reserve ('BESSR') Facility.



## Brisbane Metro Flash Charging Facilities

**Location** Brisbane, QLD  
**Market** Renewables  
**Performed by** SCEE Electrical

**Scope of Work**  
SCEE Electrical has been engaged to deliver two packages for the metro end of trip facilities upgrades as part of the Brisbane Metro project. SCEE Electrical will provide the enabling infrastructure for the end of route flash charging facilities required by the all-new battery electric metros.



## Sims Metal Management Kwinana Metal Recycling Facility

**Location** Kwinana, WA  
**Market** Recycling  
**Performed by** SCEE Electrical

**Scope of Work**  
SCEE Electrical was engaged to provide the E&I works for the Sims Metal Project. The works included HV Network and Substations Infrastructure, LV reticulation across the site and the E&I installation and commissioning of a 600HP, 11 kV metal shredder.



## EV (Electric Vehicle) Charging Kiosk

**Location** Cobar, NSW  
**Market** Renewables  
**Performed by** Trivantage Manufacturing

**Scope of Work**  
Trivantage Manufacturing designed and manufactured a range of underground electric vehicle fast charging systems that will be used to power the client's mine site electric vehicles. The enclosures house a range of equipment that includes a 150kW charging unit, a 400A distribution tier and 2x 10kW HVAC Units.



## BESS (Battery Energy Storage Systems) Enclosures

**Location** Tennant Creek, NT  
**Market** Renewables  
**Performed by** Trivantage Manufacturing

**Scope of Work**  
Trivantage Manufacturing worked closely with the client on the design and manufacture of a range of BESS (Battery Energy Storage Systems) enclosures. The BESS units are a compact, plug-and-play microgrid and battery energy storage solution built for both grid-connected and behind the meter applications.



## BHP South Flank – Autonomous Solar Boom Gates

**Location** South Flank, WA  
**Market** Renewables  
**Performed by** SEME Solutions

**Scope of Work**  
SEME Solution's client needed an access control system (ACS) that could remotely manage autonomous truck access as well as restricting access into critical areas at their South Flank mine site in Western Australia. The ACS delivered had to be able to communicate with the Gallagher Command Centre in Perth and as there was limited power on the remote site, needed to be powered with solar. SEME Solutions designed, manufactured, installed and integrated 29 portable solar powered boom gate skids that will protect the perimeter of this regional facility, allowing remote control via their command centre in Perth.



# Sustainability

**At SCEE Group, we are committed to delivering sustainable and profitable growth of our business without compromising on our responsibilities to the environment, our people and the communities in which we operate.**

Our approach to sustainability falls under the following broad categories:

### Environment

We seek to promote best environmental practices within our areas of operation through our policies and procedures.

Highlights include:

- Environmental Management Systems accredited to ISO 14001
- Low carbon footprint throughout our operations
- Contributing to the decarbonisation of Australia through our delivery of renewables, recycling and energy efficiency projects

### Health and Safety

We consider the wellbeing of our people to be of paramount importance and are committed to providing a workplace that achieves zero harm. Highlights include:

- Health and Safety Management Systems are accredited to ISO 45001
- 5 Star Commitment safety approach addressing the highest critical risk areas
- Regular injury prevention training

### People and Community

We are committed to providing a safe workplace for our people and investing in their growth. We engage with the communities in which we operate seeking to create a positive legacy through maximising local employment opportunities. Highlights include:

- Dedicated Health and Wellbeing Advisor and access to an Employee Assistance Provider
- Regular training and development opportunities
- Diversity Policy encouraging and supporting diversity in our workforce
- Indigenous Employment Policy facilitating sustainable employment opportunities
- Human Rights Policy and Modern Slavery Statement

### Corporate Governance

The SCEE Group has a Board-endorsed Corporate Governance Framework aimed at ensuring the business is managed effectively and ethically and that risks are appropriately identified, monitored and addressed. Highlights include:

- Experienced and appropriately structured Board and Committees
- Code of Conduct governing our dealings with stakeholders
- Anti-Bribery and Corruption and Whistleblower Policies





[www.scee.com.au](http://www.scee.com.au)